

FITZROVIA QUARTER
STUDIO RESIDENCIES

Meet the Artists

Introducing the artists selected to be part of
our inaugural Artist Studio Residency
programme in Fitzrovia Quarter





Jingshan Ding

Jingshan Ding is a London-based painter whose interdisciplinary background in biology and fine art informs a practice centred on the traces left by encounters between natural life and the built environment. Through layered surfaces shaped by accumulation, disruption, and renewal, her paintings evoke scars, weathered stone, water marks, and other subtle records of contact, asking how coexistence, duration, and change can be held within paint.

Ding holds a BSc in Biology from Imperial College London and an MA in Fine Art from University of the Arts London, and has exhibited internationally while being shortlisted for the Winsor & Newton x Paul Smith Foundation Art Prize 2025 and the Herbert Smith Freehills Portrait Award 2025.

FITZROVIA QUARTER
STUDIO RESIDENCIES





Run!!, 2026
Jingshan Ding

Oil and acrylic on linen, 41 x 88 cm
Installation view in London





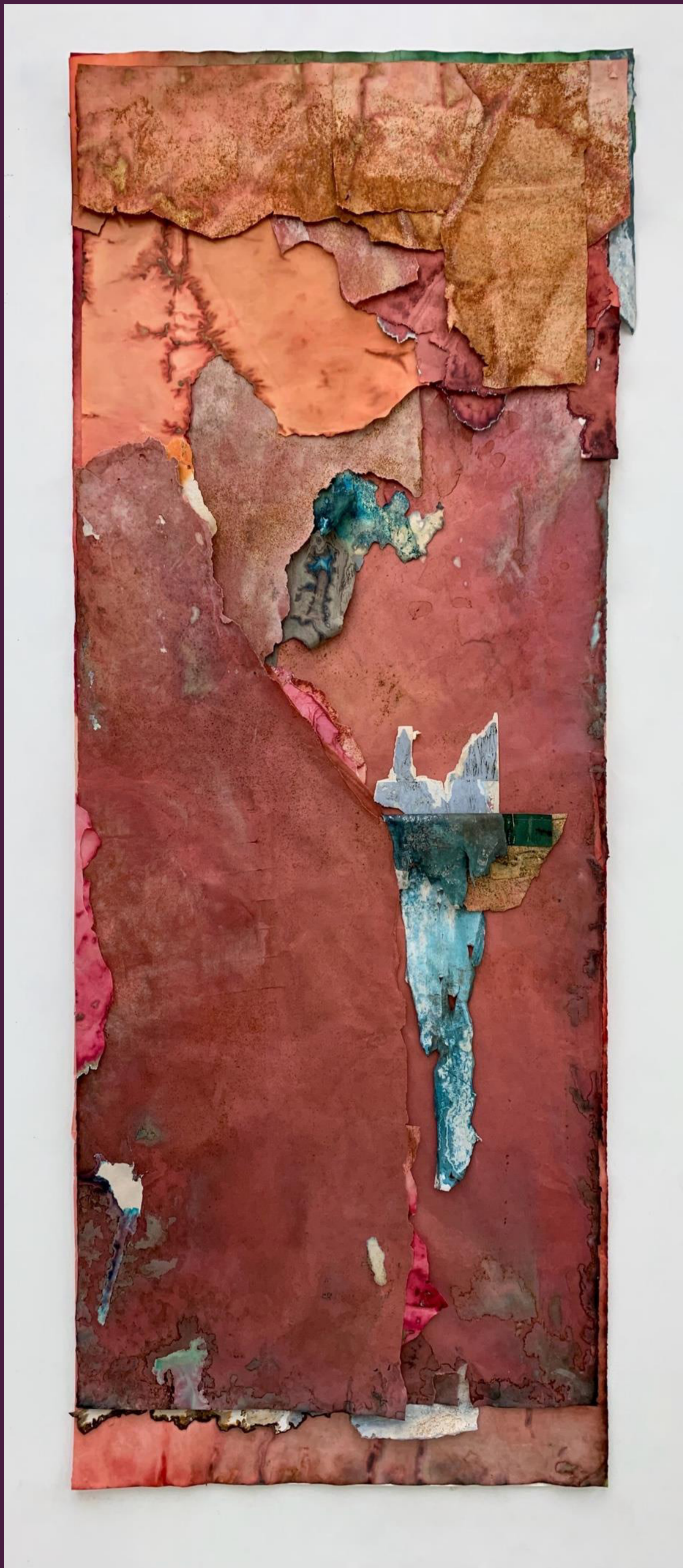
Purdey Fitzherbert

Purdey Fitzherbert is a London-based process painter whose work explores material history, urban transience, and the slow imprint of time on the built environment. Working with handmade Japanese paper, pigments, inks, minerals, foraged dyes, and found materials, she creates layered surfaces through staining, rubbing, erosion, oxidation, and transfer, allowing intention and instability to meet so that each work carries the residue of place, weathering, and human activity.

Fitzherbert studied at Wimbledon College of Art and Newcastle University, and has exhibited internationally since 2011 across the UK, Europe, Brazil, and the United States, including at Messums, Dickinson Gallery, SP-Arte Sao Paulo, and the Dallas Art Fair.

FITZROVIA QUARTER
STUDIO RESIDENCIES





HANGING MANTLE

Purdey Fitzherbert

Japanese paper, inks, dyes, pigment, rust, salt,
found demolition paper
Framed 200 x 80 cm





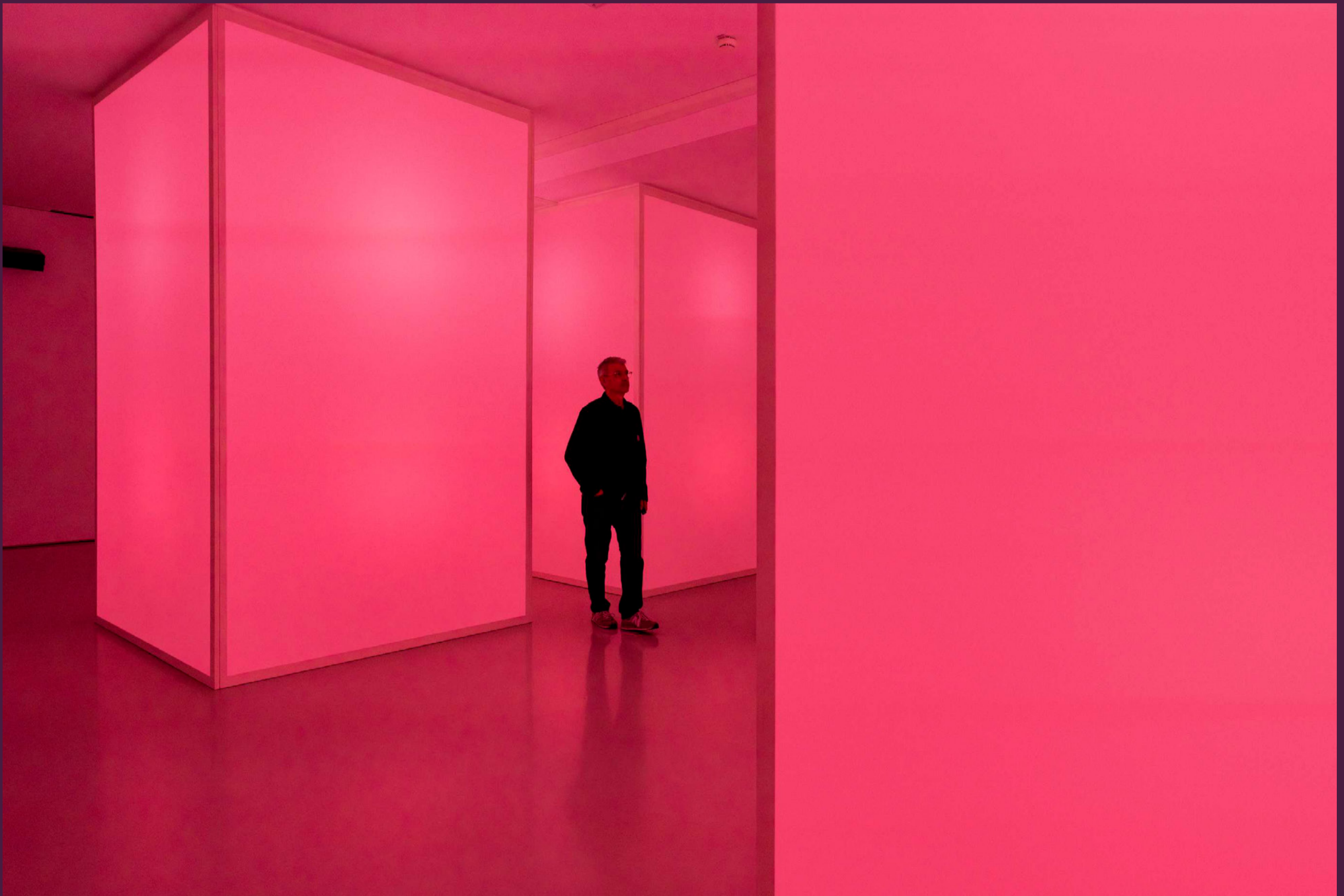
Esmeralda Conde Ruiz

Esmeralda Conde Ruiz is a Spanish artist based in London whose installations, sculptures, and performances explore transformation, uncertainty, and impermanence within social and ecological contexts. Working with glass, light, sound, and bioplastic, she builds colour-saturated environments that remain in visible flux, drawing on minimalism, geometric abstraction, and colour psychology to create spaces where stability feels temporary and viewers become physically and emotionally implicated in processes of change.

Conde Ruiz holds an MA in Sculpture from the Royal College of Art and has presented solo and group exhibitions internationally, including at Tate Modern, Gropius Bau, HELLERAU, and Burghof Lorrach.

FITZROVIA QUARTER
STUDIO RESIDENCIES





24/7, 2023

Esmeralda Conde Ruiz

16 channel audio installation, 4 subwoofers, 32 cameo lights
4 site-specific cubes (2m x 2m), wood and CYC fabric





Holly Keogh

Holly Keogh is a process-based painter whose work brings together painting and experimental printmaking to examine glamour, femininity, and the unstable boundary between public and private life. Drawing on family photographs, art history, popular culture, and lived experience, she stages saturated compositions in which durable painted imagery meets fragile transferred impressions, using a self-developed relief process that allows presence, disappearance, desire, and vulnerability to remain in tension.

Keogh is an American artist based in London, with an MA in Fine Art from Goldsmiths and undergraduate studies in Fine Art and Art History at UNC-Charlotte.

FITZROVIA QUARTER
STUDIO RESIDENCIES





Falling And Laughing, 2026

Holly Keogh

Acrylic on canvas





Monya Riachi

Monya Riachi is an interdisciplinary artist whose research-led, material-based practice moves across sculpture, installation, painting, writing, and performance. Treating matter as both archive and narrative, she interlaces politics, poetry, and affect to explore land, memory, ecological transformation, and the entangled geographies of Lebanon and Britain, often developing work collaboratively with musicians, craftspeople, writers, scientists, and philosophers.

Riachi holds an MFA with distinction from Glasgow School of Art, has exhibited in the UK, Lebanon, and Italy, and has received the Lewisham Arthouse Postgraduate Award and the Boghossian Foundation Visual Arts Prize ahead of her Sharjah Art Foundation Residency in 2026.

FITZROVIA QUARTER
STUDIO RESIDENCIES





For those who favour lines, water speaks otherwise, 2026

Monya Riachi

Sea salt, water, pigment, chalk, resin and time on
wood board

Diptych 125 x 240 cm





Tabitha Wilson

Tabitha Wilson is a painter whose practice explores sound, motion, and resonance through expansive, experiential works attuned to rhythm, repetition, and states of change. Moving between painting, writing, installation, and sound, she draws on the shifting qualities of sea, light, refraction, and movement to create luminous surfaces that unfold spatially and temporally, asking how painting might hold sensations of flux, proximity, and the unstable edge between abstraction and lived experience.

Wilson lives and works in London, recently completed an MA in Painting at the Royal College of Art, and previously studied Fine Art at Wimbledon College of Art, UAL.

FITZROVIA QUARTER
STUDIO RESIDENCIES





Seismic shifts courting silver

Tabitha Wilson

Oil on Canvas
160 x 200 cm

